



ecopress
RECYCLING EQUIPMENT

EHB S50 | AUTOMATIC BALER | MODEL

ECOPRESS Pro Auto tie Machine baler presses



ECOPRESS Pro Auto tie Machine balers has been developed in many areas for over 20 years. Wide model range of Ecopress PAM baler can suit and adopt efficiently to different capacity purposes. It depends on characteristics of the input material: density, composition, volume, size, moisture, etc. The production of the baler (tons per hour) considering different input densities is indicated in attached technical specification sheet. This data is only as a reference. For estimating the production the customer should take in to account that the baler needs some daily maintenance (cleaning) as indicated in the instruction manual and also feeding the machine properly.

GENERAL OPERATION

Baling - there are two pairs of sensors placed in the hopper of the baler for controlling the feeding operation located at the bottom. When the sensors of the bottom are activated the baler starts the compaction cycle, when those sensors are not activated the baler is in stand-by waiting for more material. The cycle starts when the ram moves forward introducing (compacting) the material inside the chamber and going back to the initial position. For making a bale the machine needs various cycles, depending on the desired bale density.

ECOPRESS Pro Auto tie Machine balers conform to Health & Safety and CE requirements of EU Directives 2006/42/EC, 89/392EEC, 91/368EEC, 93/44EEC, 93/68EEC on the safety of machinery and equipment and German accident prevention regulations.

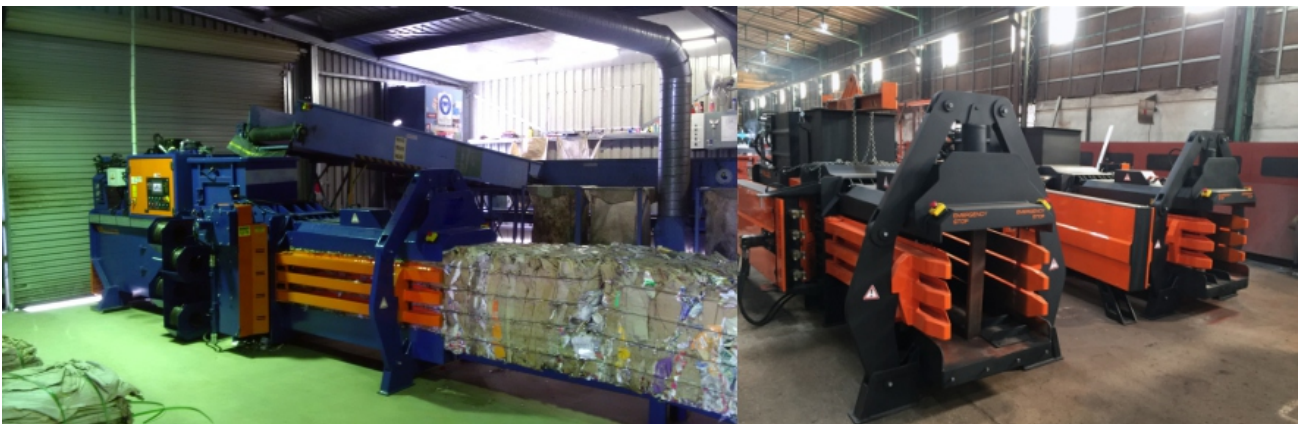


ecopress
RECYCLING EQUIPMENT



FEATURES

- Low Energy Consumption
- Safe and easy usage
- Long life Low Noise (60 dB)
- Reliable Constriction
- Wire Driving
- Touch Screen 7" PLC Control
- Infrared Actuators 3 Set
- Continuous Feed Baler
- Automatic Wire Tie
- Machine comes with bale counter and info feed to PLC how much bale has been created
- Live pressure shows on the PLC
- Colour coding system for different materials in the operation system
- Pre define pressure settings system for different materials
- Hour counter, overloading, emergency stop, door open warning system are available
- A set of maintenance tools will be provided for the machine
- Automation package in feed management system
- Body shear blade/adjustable cutting knives in replaceable
- Hopper view door
- Free-standing operator centre
- Automation switch-off when filling is not in process
- Compaction chamber floor Replaceable HARDOX plates.
- Machine automation troubleshoot is possible through laptop over internet.
- Special electronic security device for inspection and access door. (Magnetic coded two way device)





TECHNICAL INFORMATION

General Performance Specifications	
Main Motor Power	1 x 22 kw
Bale Size (width x height x length)	750 mm x 750 mm x variable bale length mm
Main RAM Cycle Time	32 sec (When the hopper is empty)
Oil Tank Capacity	700 liters
Press Capacity at 50kg/m ³	1.2 – 1.5 tons/hour (Depending on feeding)
Bale Weight	275 – 350 kg/p
Number of Wire	4 horizontal
Wire Binding System	Hydraulic Push-Cutting Folding
Total Force	Max 50 tons

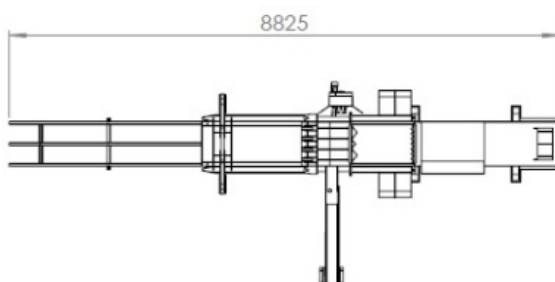
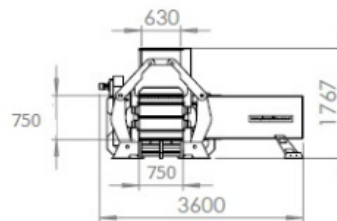
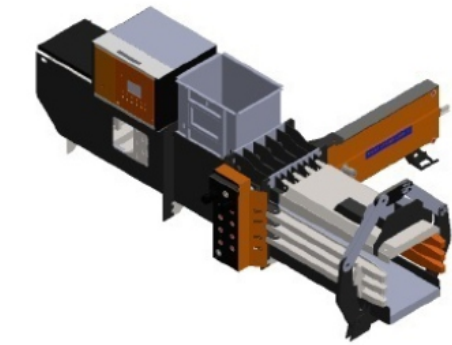
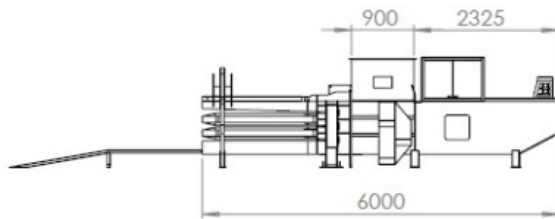
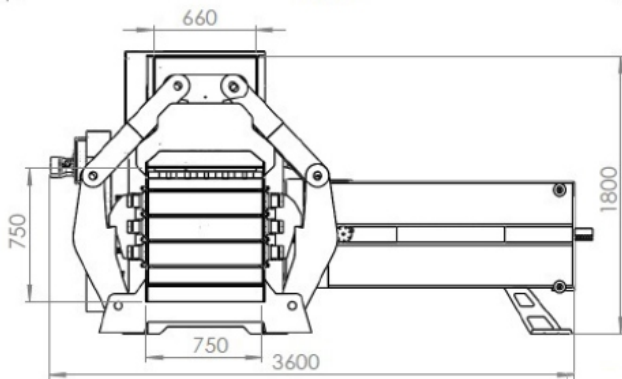
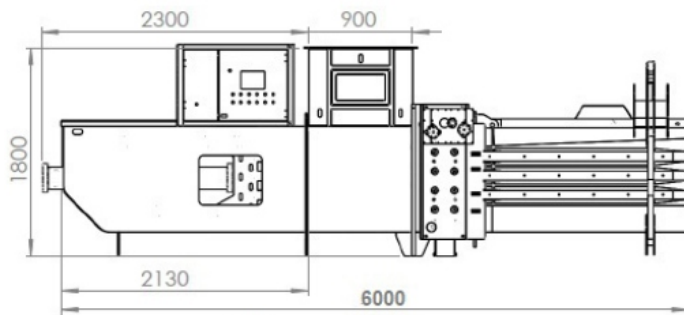
Dimensional Specifications	
Hopper Opening	900 mm X 680 mm
Machine Length	6000 mm
Machine Width	4050 mm
Machine Height	2500 mm
Machine Weight	~ 8500 kg

Electrical Specifications	
Main Voltage	400 Volt – 3 phase – 50 Hz
Control Voltage	24 Volt DC
Programmable Controller & Operator Interface	DELTA PLC & 7" Touch Screen Colour Display
Automation Components	Brand : Schneider Germany
Automation Management System	P.A.M.

Hydraulic Specifications	
Power Pack Type	Hydrologic and the regenerative block
Pump System	Fixed flow Piston Pump
Power Pack Location	Backside of Hydraulic Unit
Hydraulic Hoses	Dunlop or Equivalent R9 Hoses
Oil Level Indicator	✓

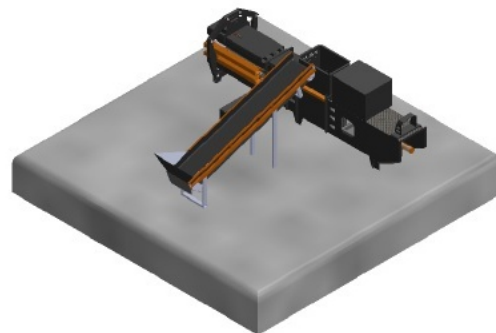
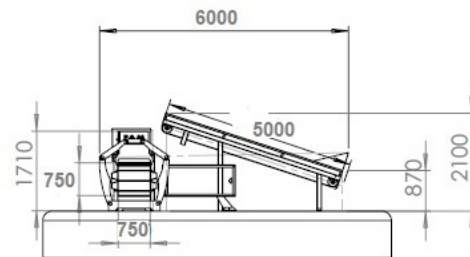
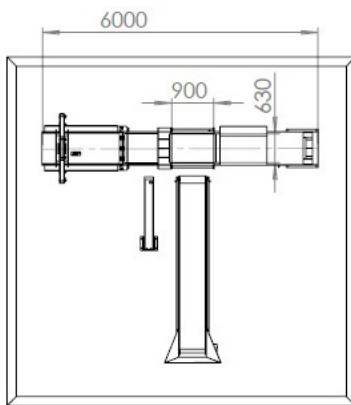
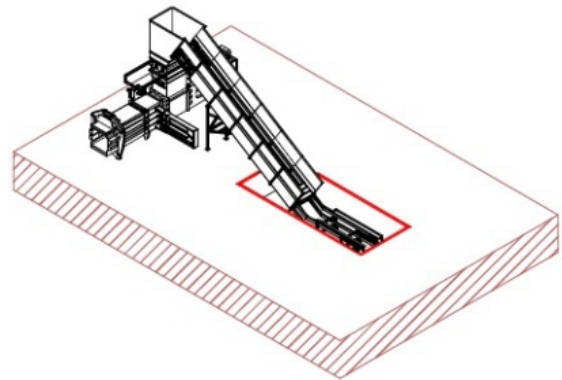
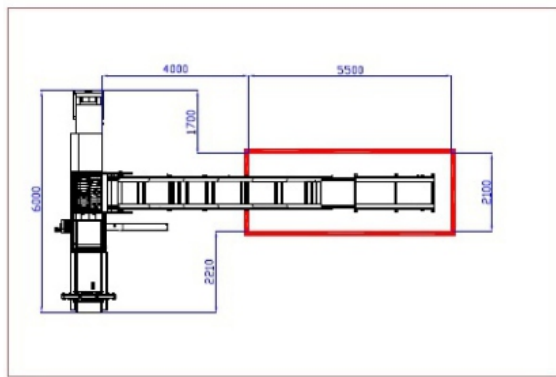
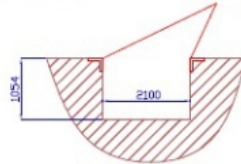
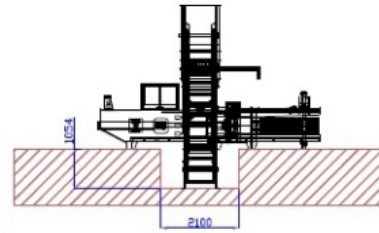
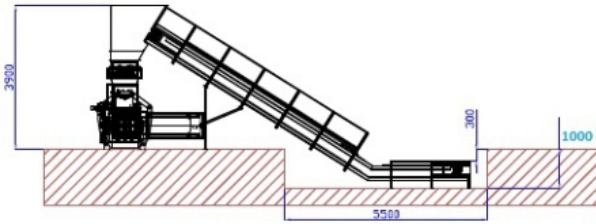


Oil Temperature Indicator	✓
PAM Structure	Sliding Quadrant
Filling Hopper Sensor	2 Sensor Specially Positioned
Conveyor Control, Bale Counter, Observation Window	Standard
Emergency Stop Assembly	✓





ecopress
RECYCLING EQUIPMENT



Ecopress Waste Systems OÜ
Osmussaare tn 8
13811 Tallinn
Harjumaa, Estonia
www.ecopress.ee